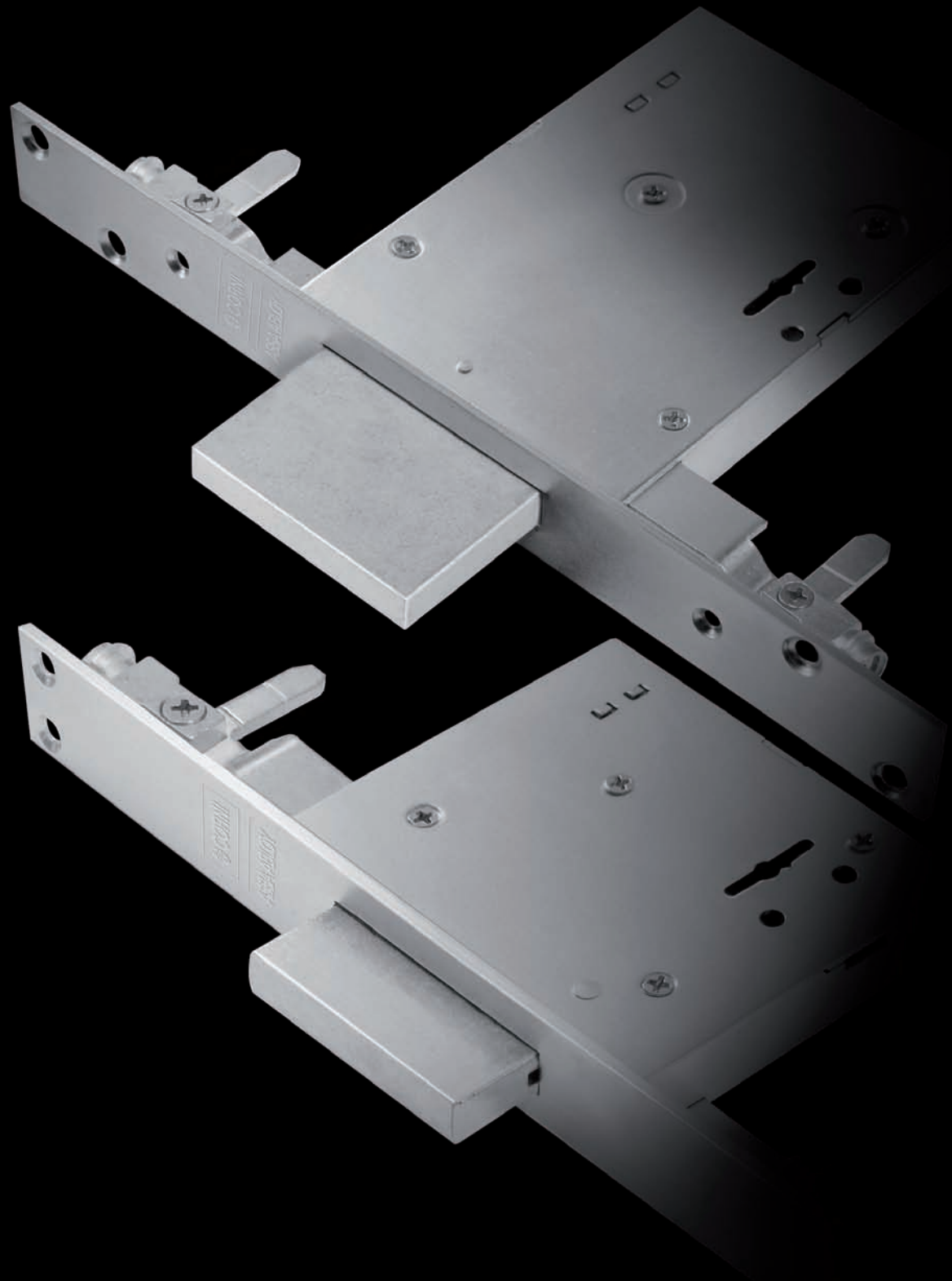


# Trak



ASSA ABLOY

ASSA ABLOY, the global leader  
in door opening solutions



# TRAK 4

## Serratura 4 mandate a doppia mappa per inferriate e cancelletti di sicurezza

### Caratteristiche tecniche:

- Solo catenaccio, 4 mandate
- Entrate 50, 60, 70 mm
- Ambidestra
- 1 o 3 punti di chiusura (triplice)
- Attacchi M8 premontati per aste filettate
- Frontale 25x3 mm
- Altezza scatola serratura 82 mm
- Serratura, frontale e catenaccio in acciaio zincato
- Versione KA a stock
- Confezione in sacchetto di nylon

### Confezione:

- 2 chiavi
- 2 chiavi anche in versione KA
- 2 rosette in acciaio zincato
- Attacco aste M8 (per la triplice)

### Da ordinare a parte:

- Contropiastre
- Coppia aste con innesto M8

## Four throws multilever lock for safety railings and gates

### Features:

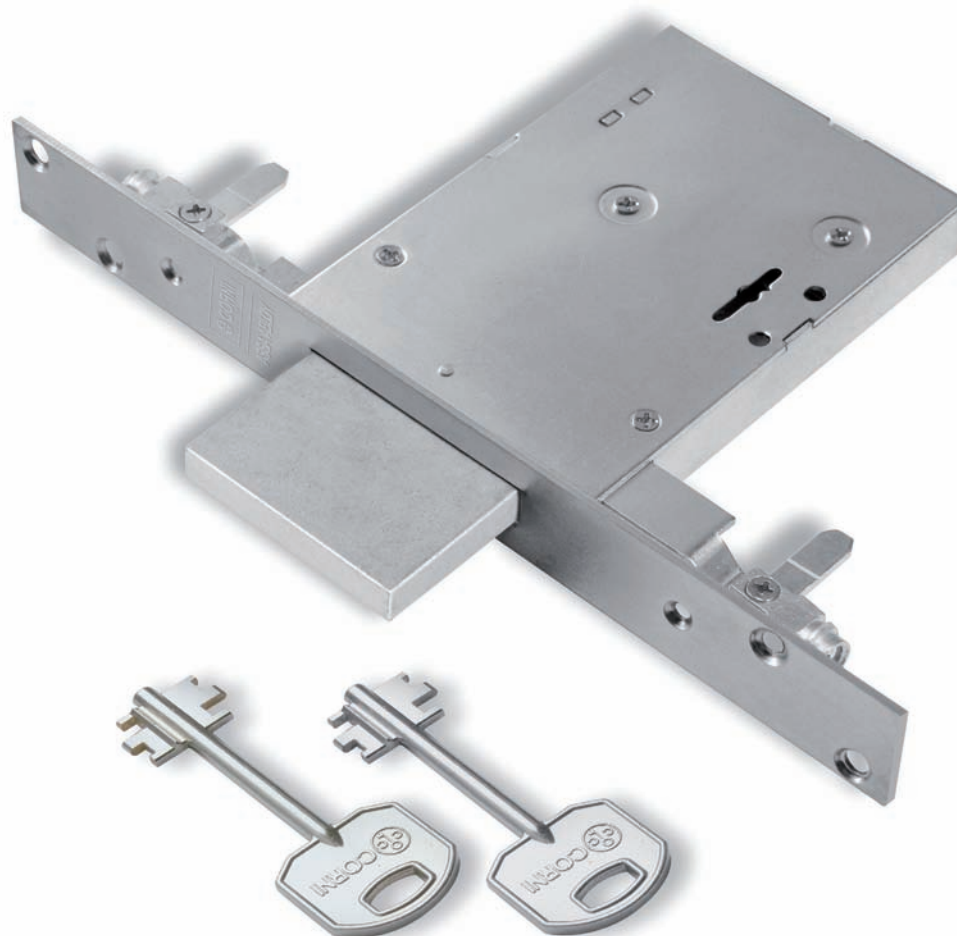
- Dead bolt only, 4 throws
- Backsets 50, 60, 70 mm
- Ambidextrous
- 1 or 3 locking points (triple lock)
- Set M8 joint rods
- 25x3 mm forend
- Lock case 82 mm high
- Zinc-plated steel lock, forend and dead bolt
- Stock KA version
- Packaged in nylon bag

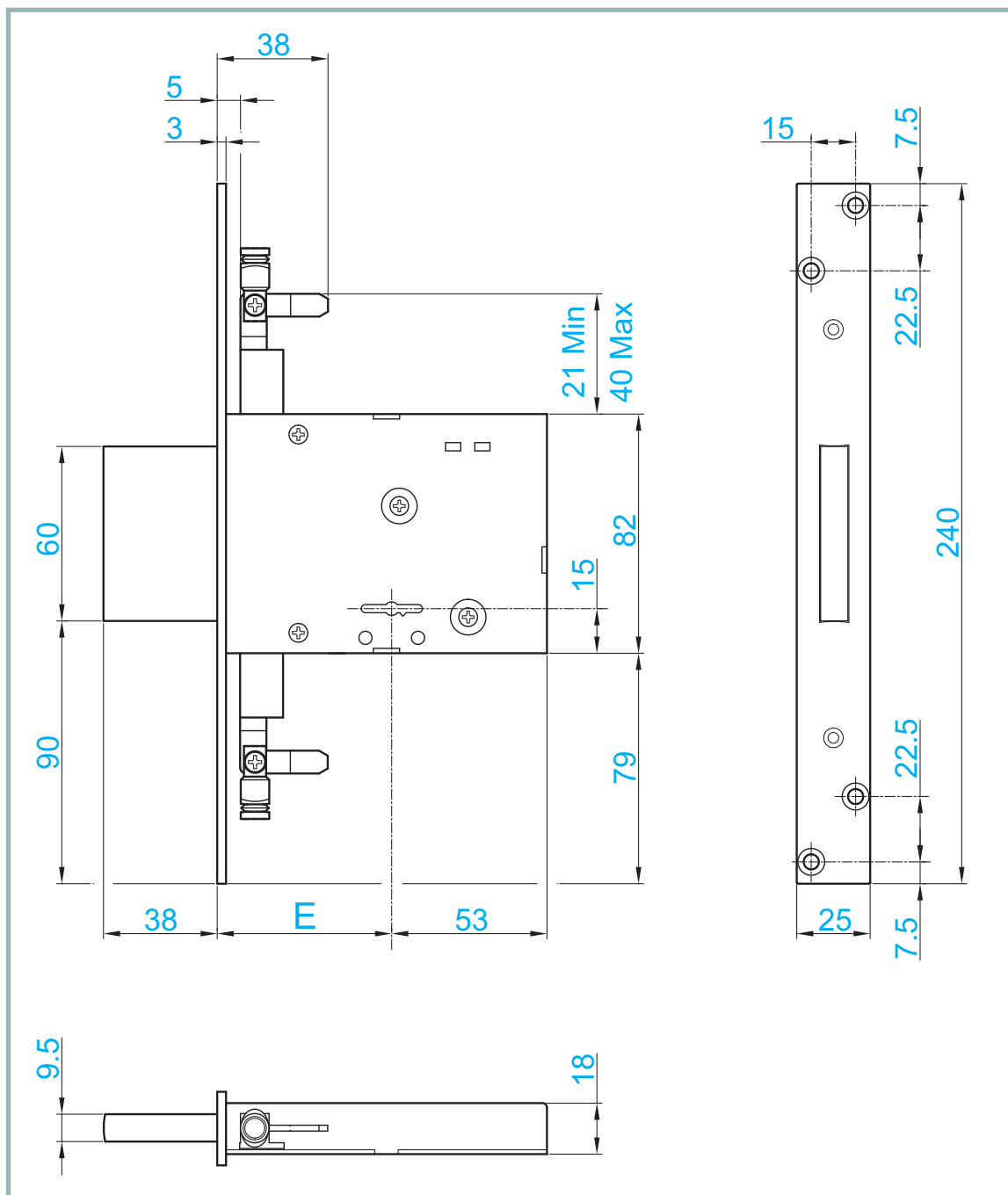
### Packaging:



- 2 keys
- 2 keys (KA version also)
- 2 zinc-plated steel escutcheons
- Joint for M8 rods (for triple lock)

### To be ordered separately:

- Strikes
- Pair of rods with M8 joint





	Codice / Code	Mandate Throws	E Entrata/Backset	N° chiusure Nr looking point	Chiave Key		
Serratura base Base lock	91004 52 000	4	52	1	01901 00 000	850	12
	91004 60 000	4	60	1	01901 00 000	900	12
	91004 70 000	4	70	1	01901 00 000	950	12
Chiavi uguali Same keys	91004 52 000 KA	4	52	1	01901 00 000	850	12
	91004 60 000 KA	4	60	1	01901 00 000	900	12
	91004 70 000 KA	4	70	1	01901 00 000	950	12
Serratura triplice Triple lock	91014 60 000	4	60	3	01901 00 000	950	12
	91014 70 000	4	70	3	01901 00 000	1000	12
Chiavi uguali Same keys	91014 60 000 KA	4	60	3	01901 00 000	950	12
	91014 70 000 KA	4	70	3	01901 00 000	1000	12

# TRAK 2

## Serratura 2 mandate a doppia mappa per inferriate e cancelletti di sicurezza

### Caratteristiche tecniche:

- Solo catenaccio, 2 mandate
- Entrate 45, 50, 60 mm
- Ambidestra
- 3 punti di chiusura (triplice)
- Attacchi M8 premontati per aste filettate
- Frontale 25x3mm
- Altezza scatola serratura 93mm
- Serratura, frontale e catenaccio in acciaio zincato
- Versione KA a stock
- Confezione in sacchetto di nylon

### Confezione:

- 2 chiavi
- 2 chiavi anche in versione KA
- 2 rosette in acciaio zincato
- Attacco aste M8 (per la triplice)

### Da ordinare a parte:

- Contropiastre
- Coppia aste con innesto M8

## Two throws multilever lock for safety railings and gates

### Features:

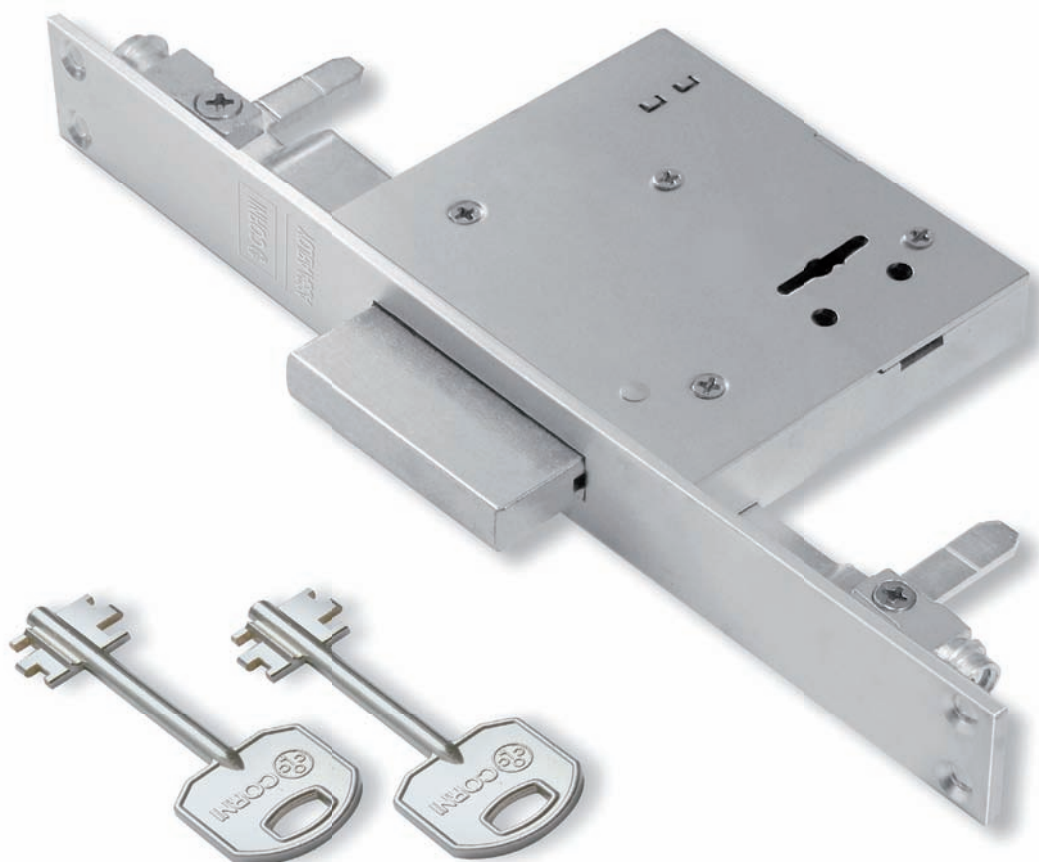
- Dead bolt only, 2 throws
- Backsets 45, 50, 60 mm
- Ambidextrous
- 3 locking points (triple lock)
- Set M8 joint rods
- 25x3 mm forend
- Lock case 93 mm high
- Zinc-plated steel lock, forend and dead bolt
- Stock KA version
- Packaged in nylon bag

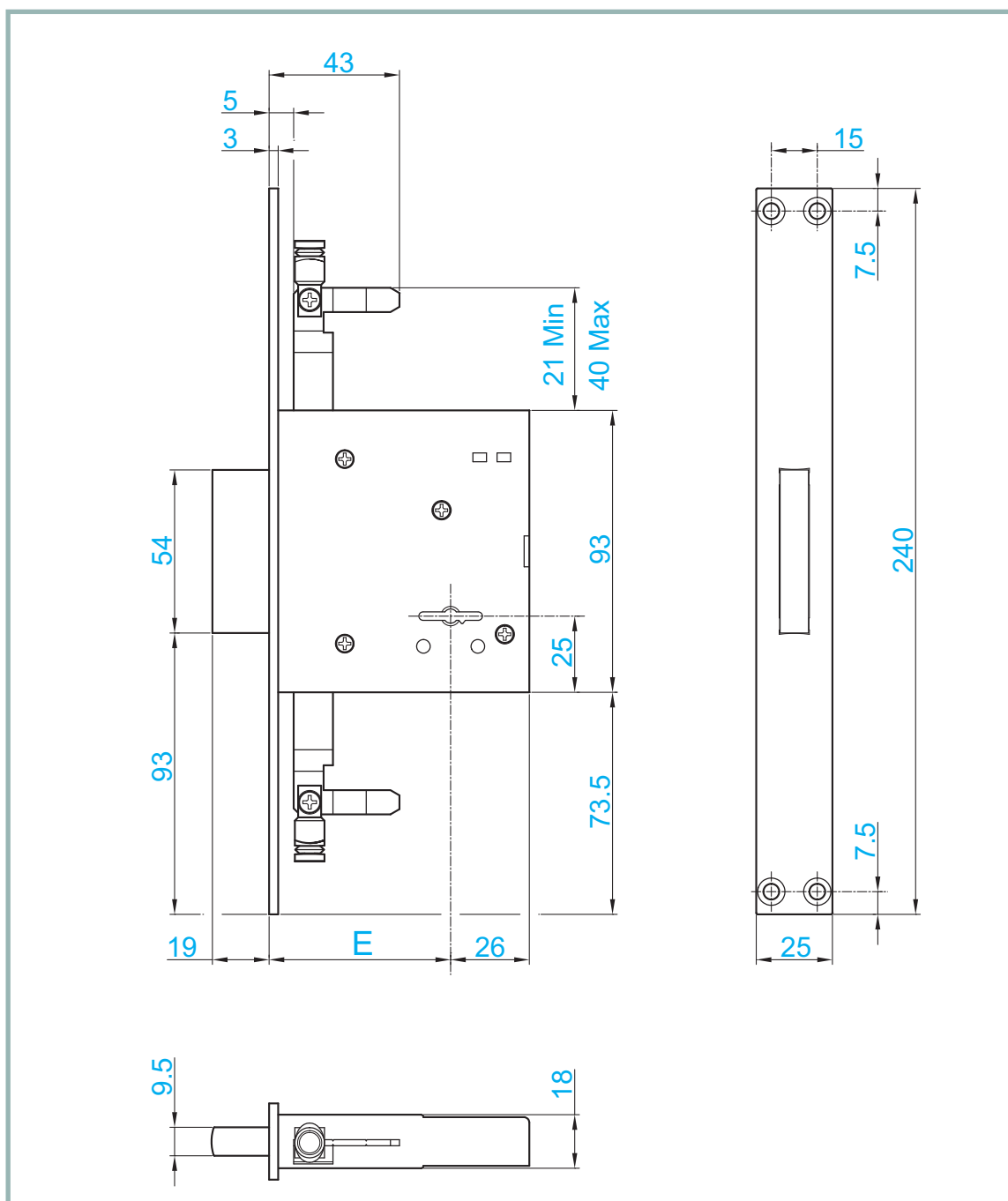
### Packaging:

- 2 keys
- 2 keys (KA version also)
- 2 zinc-plated steel escutcheons
- Joint for M8 rods (for triple lock)

### To be ordered separately:

- Strikes
- Pair of rods with M8 joint





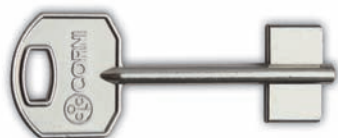
Serratura triplice  
Triple lock



Chiavi uguali  
Same keys

Codice / Code	Mandate Throws	E Entrata/Backset	N° chiusure Nr looking point	Chiave Key	gr.	
91012 45 000	2	45	3	01901 00 000	675	12
91012 50 000	2	50	3	01901 00 000	700	12
91012 60 000	2	60	3	01901 00 000	750	12
91012 45 000 KA	2	45	3	01901 00 000	675	12
91012 50 000 KA	2	50	3	01901 00 000	700	12
91012 60 000 KA	2	60	3	01901 00 000	750	12

# Accessori per TRAK



## Accessories for TRAK



Codice / Code		
01901 00 000	20	12

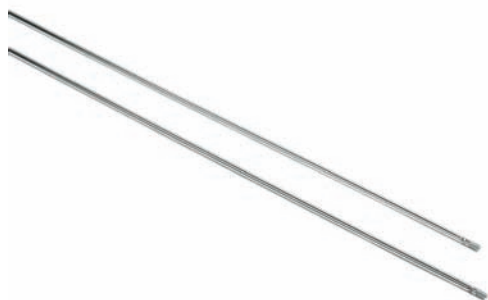
Chiave grezza doppia mappa  
Blank multilever key



Codice / Code		
02210 01 000	100	12

Contropiastra in acciaio zincato 230x25x3 mm  
230x25x3 mm zinc-plated steel strike

# Accessori per TRAK Accessories for TRAK



Codice / Code



Coppia aste dritte con attacco filettato M8  
Vertical rods

**09800 01 800**

370

10



Codice / Code

mm



Coppia puntali antisega da inserire nelle aste diam. 8 mm  
Set of saw-resistant shoot ends to insert in the 8 mm diameter rods

**6814**

Ø 8

62

1



Codice / Code



Bocchetta a pavimento  
Floor striker

**6816**

30

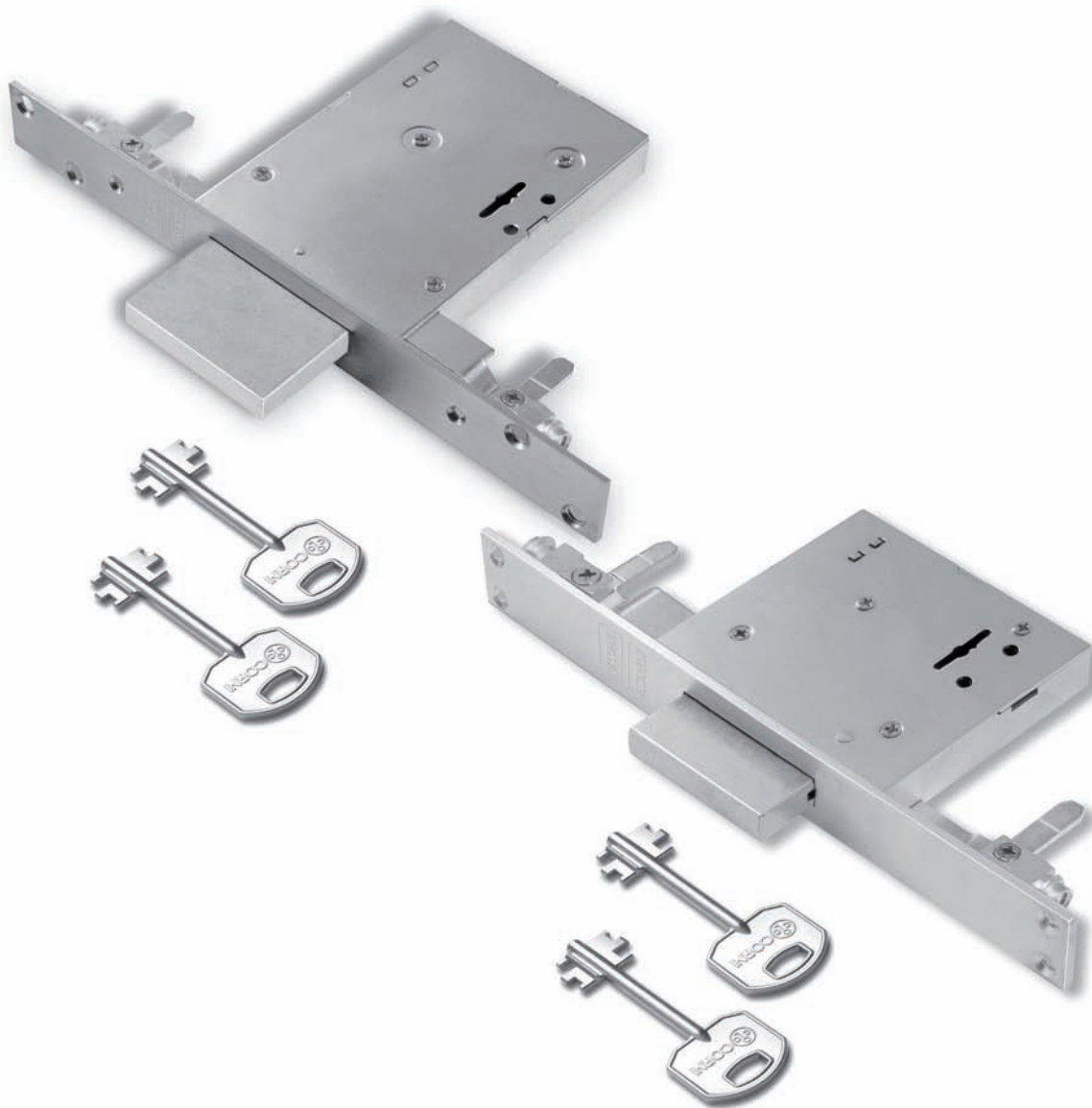
1

Bocchetta a pavimento con molla antipolvere  
Floor striker with dust cup

**6816/1**

30

1



ASSA ABLOY Italia S.p.A.  
Via Modena 68 - 40017 San Giovanni in Persiceto (BO) Italy  
Tel. +39 051 6812411 - Fax +39 051 827486  
info@assaabloy.it - www.assaabloy.it

ASSA ABLOY is the global leader in door opening solutions, dedicated to satisfying end-user needs for security, safety and convenience.

[www.assaabloy.com](http://www.assaabloy.com)



ASSA ABLOY Italia S.p.A. si riserva di apportare in qualunque momento e senza preavviso le modifiche necessarie per migliorare ed evolvere le caratteristiche dei propri prodotti. Fotografie, illustrazioni e descrizioni sono da ritenersi indicative.  
ASSA ABLOY Italia S.p.A. reserves the right at any time, and without notice, the necessary modifications in order to improve and evolve the characteristics of their products. Photographs, illustrations and descriptions ought to be considered as indicative.

H001525 - 04/2010